

FEATURES

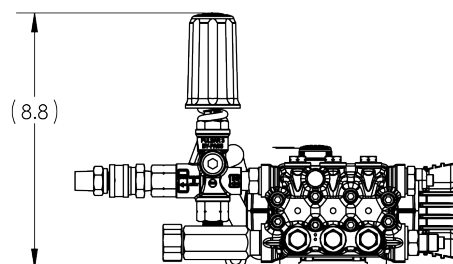
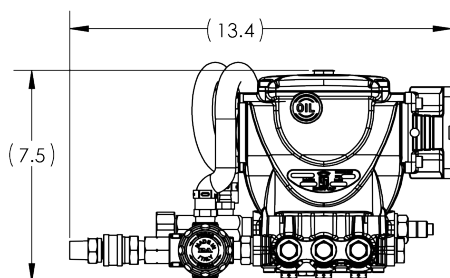
- Pump is ready to use right out of the box
- ET1507G6 Pump with SAE J609A Gas Flange
- PULSAR4KHPEZ Unloader, 4050 PSI, 10 GPM
- 3/8" Quick Coupler and 3/8" Plug Included
- 3/4" Garden Hose Inlet Fitting with 1/4" Side Port
- 3/8" Hose Barb and Clamp Keeps Hose Secure and Sealed
- General Pump recommends installing a secondary relief and pressure gauge



SPECIFICATIONS

Pump Model	PMRET1506G6	PMRET1507G6
Maximum Volume	2.9 GPM	3.2 GPM
Maximum Discharge Pressure	2610 PSI	
Maximum Pump Speed	3400 RPM	
Maximum Inlet Pressure	125 PSI	
Maximum Inlet Vacuum	3 ft. water (2.6 in. Hg)	
Plunger Bore	.591 in. / 15 mm	
Plunger Stroke	.256 in./6.5 mm	.283 in. / 7.2 mm
Crankcase Oil Capacity	8.5 oz.	
Maximum Fluid Temperature	165° F	
Inlet Port Thread	1/2-14 BSP-F	
Discharge Port Thread	3/8-19 BSP-F	
Shaft Diameter	3/4 in. / 19.05 mm	
Weight	11.0 lbs.	
Dimensions	7.4" x 7.7" x 3.3"	

DIMENSIONAL DRAWING

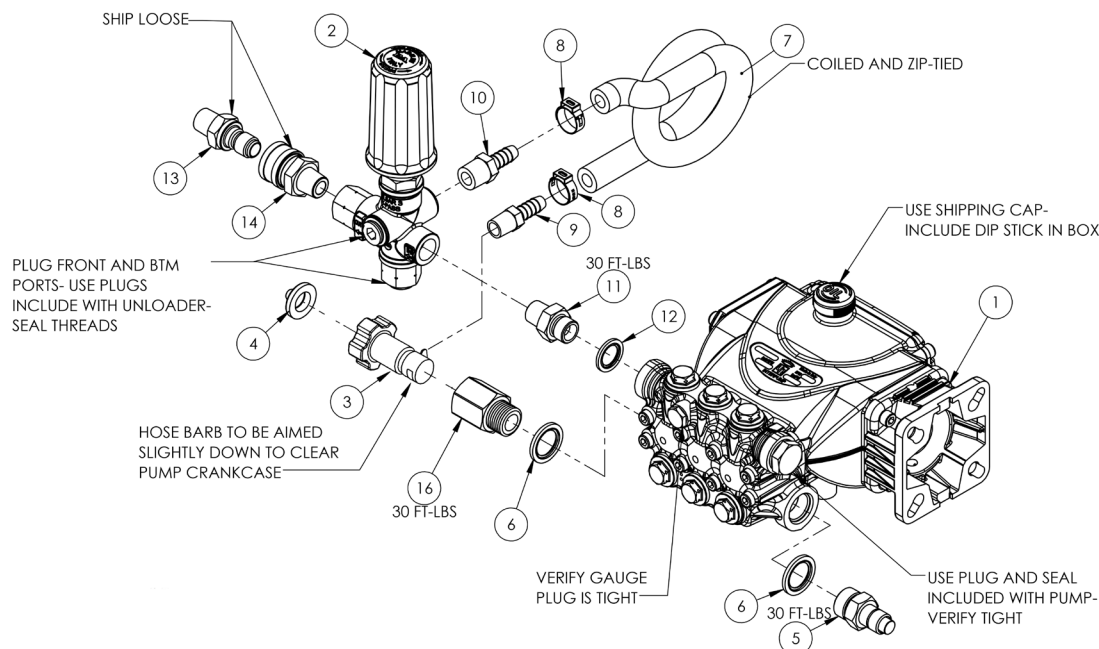


General Pump
is a member of
the Interpump Group



Ref 310125 Rev. D
02-20





PARTS LIST

Item No.	Part No.	Description	QTY.
1.	ET1506G6	Pump, EP, Gas Flange, 3/4" Hollow Shaft, 2.9 GPM, 2610 PSI, 3400 RPM	1
	ET1507G6	Pump, EP, Gas Flange, 3/4" Hollow Shaft, 3.2 GPM, 2610 PSI, 3400 RPM	
2.*	PULSAR4KHPEZ	Unloader, T.P., 4050 PSI, 10.5 GPM, EZ Start	1
3.*	680017	Inlet Fitting Assy, Long, 1/2" NPT, 1/4" Port, Capped	1
4.*	700004	Filter Washer	1
5.	2100612MB	Valve, PTP, 1/2" BSPP-M 140-151 Deg, 145 PSI	1
6.*	680110	Seal Ring, 1/2" BSPP	2
7.*	639387	Hose, 3/8" ID, 250 PSI BLK	3
8.*	639897	Hose Clamp, Crimp Type, 39/64" to 47/64", 9/32" WD	2
9.*	638147	3/8" Hose Barb x 1/4" NPT	1
10.*	638148	3/8" Hose Barb x 3/8" NPT	1
11.*	639298	Adapter, Hex, 3/8" BSPP-M x 3/8" NPT, Steel, 5000 PSI	1
12.*	680029	Washer, Face Seal, 3/8" BSP	1
13.*	D11009	Plug, 3/8" QC x 3/8" NPT-M, Zinc Plated Steel, Hardened	1
14.*	D10004	Coupler, 3/8" QC x 3/8" NPT-M, Brass	1
15.	400128	Warning Label, Prop 65, 1.5" x.25" WD	1
16.*	639385	Fitting, 1/2" F-NPT x 1/2" BSPP	1
*	PMRPULSAR4KHPES		