

# GENERAL PUMP A member of the Interpump Group

## Pumps Made Ready

### PMREP1313G8 Triplex Plunger Pump

#### FEATURES

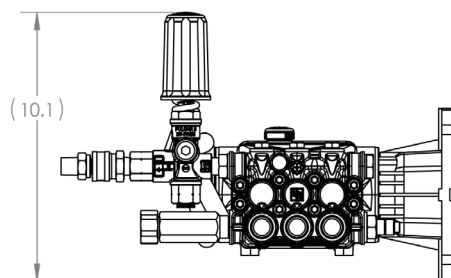
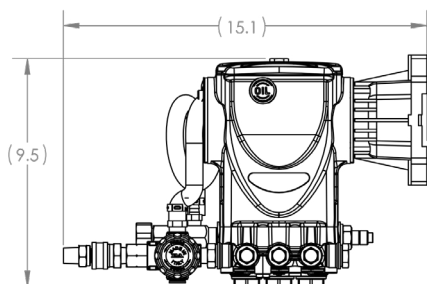
- Pump is ready to use right out of the box
- EP1313G8 Pump with SAE J609B Gas Flange
- PULSAR4KHPEZ Unloader, 4050 PSI, 10 GPM
- 3/8" Quick Coupler and 3/8" Plug Included
- 3/4" Garden Hose Inlet Fitting with 1/4" Side Port
- 3/8" Hose Barb and Clamp Keeps Hose Secure and Sealed
- General Pump recommends installing a secondary relief and pressure gauge



#### SPECIFICATIONS

Pump Model	PMREP1313G8
Maximum Volume	4.0 GPM
Maximum Discharge Pressure	4000 PSI
Maximum Pump Speed	3400 RPM
Maximum Inlet Pressure	125 PSI
Maximum Inlet Vacuum	3 ft. water (2.6 in. Hg)
Plunger Bore	.512 in. / 13 mm
Plunger Stroke	.512 in. / 13 mm
Crankcase Oil Capacity	15.0 oz.
Maximum Fluid Temperature	165° F
Inlet Port Thread	1/2-14 BSPP-F
Discharge Port Thread	3/8-19 BSPP-F
Shaft Diameter	1.0 in. / 25.4 mm
Weight	15.9 lbs.
Dimensions	9.5" x 9.5" x 6.45"

#### DIMENSIONAL DRAWING

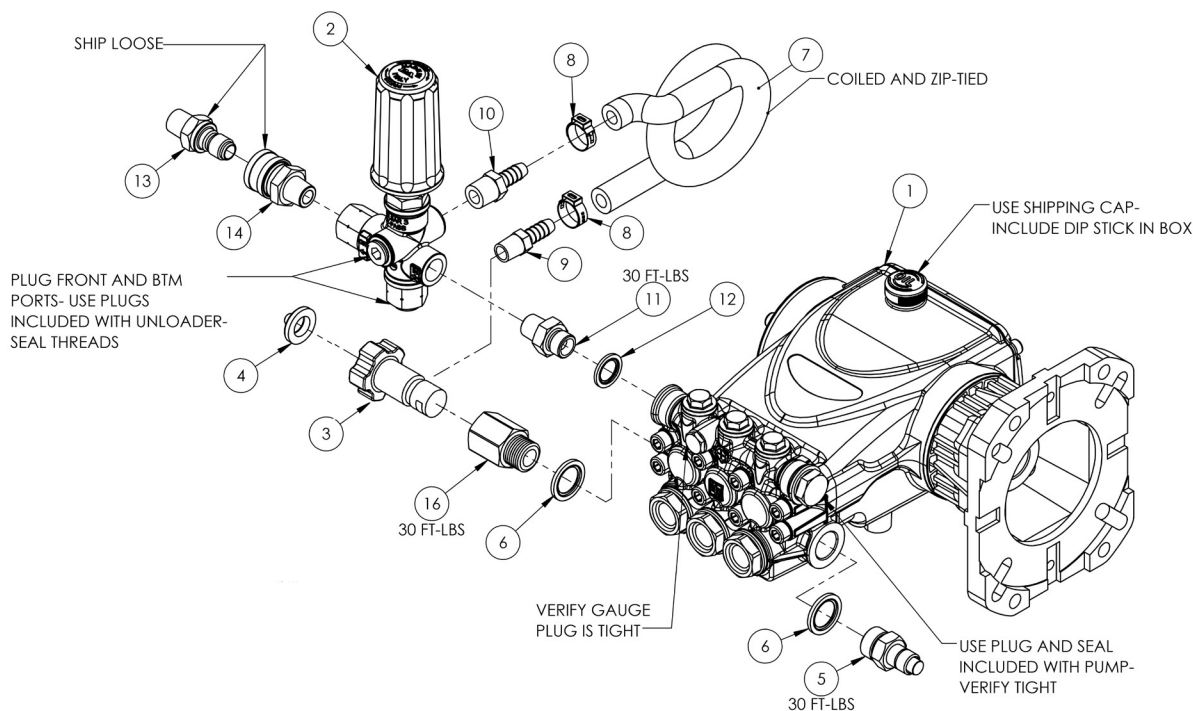


General Pump  
is a member of  
the Interpump Group



Ref 310124 Rev. E  
02-20





## PARTS LIST

Item No.	Part No.	Description	QTY.
1.	EP1313G8	Pump, EP, 1" Hollow Shaft, 4000 PSI, 4 GPM, EZ, 3400 RPM, Gas Flange	1
2.*	PULSAR4KHPEZ	Unloader, T.P., 4050 PSI, 10.5 GPM, EZ Start	1
3.*	680017	Inlet Fitting Assy, Long, 1/2" NPT, 1/4" Port, Capped	1
4.*	700004	Filter Washer	1
5.	2100612MB	Valve, PTP, 1/2" BSPP-M 140-151 Deg, 145 PSI	1
6.*	680110	Seal Ring, 1/2" BSPP	2
7.*	639387	Hose, 3/8" ID, 250 PSI BLK	3
8.*	639897	Hose Clamp, Crimp Type, 39/64" to 47/64", 9/32" WD	2
9.*	638147	3/8" Hose Barb x 1/4" NPT	1
10.*	638148	3/8" Hose Barb x 3/8" NPT	1
11.*	639298	Adapter, Hex, 3/8" BSPP-M x 3/8" NPT, Steel, 5000 PSI	1
12.*	680029	Washer, Face Seal, 3/8" BSP	1
13.*	D11009	Plug, 3/8" QC x 3/8" NPT-M, Zinc Plated Steel, Hardened	1
14.*	D10004	Coupler, 3/8" QC x 3/8" NPT-M, Brass	1
15.	400128	Warning Label, Prop 65, 1.5" x.25" WD	1
16.*	639385	Fitting, 1/2" F-NPT x 1/2" BSPP	1
*	PMRPULSAR4KHPES	PMR Kit	