



## 360 DEGREE PIVOT HOSE REEL (REEL-ALKP38200)



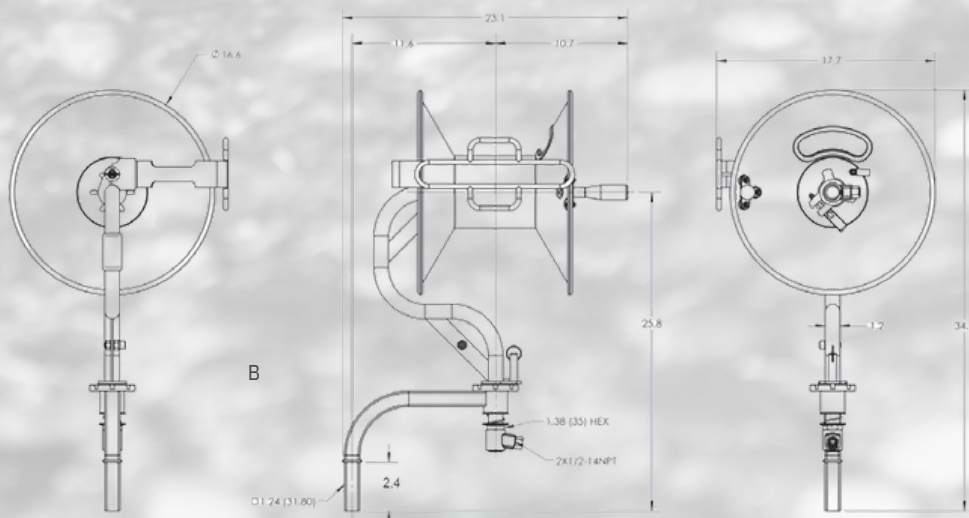
### SPECIFICATIONS

- 200 ft 3/8 in Hose Capacity
- 1/2 FNPT Inlet/Outlet (includes 2 x 3/8 in reducer fittings)
- 360 Degree Swivel Rotation
- 5000 psi SS Swivel
- 250 Deg F Max Temp

### FEATURES & BENEFITS

- Direct hand-crank rewind with locking pin
- Solid Steel Construction
- Durable powdercoated finish
- Robust folding handle
- 180 deg pivoting hose guide
- Adjustable friction lever brake
- Full flow high pressure stainless steel swivel
- Coupler connection to secure hose when not in use

### DIMENSIONS

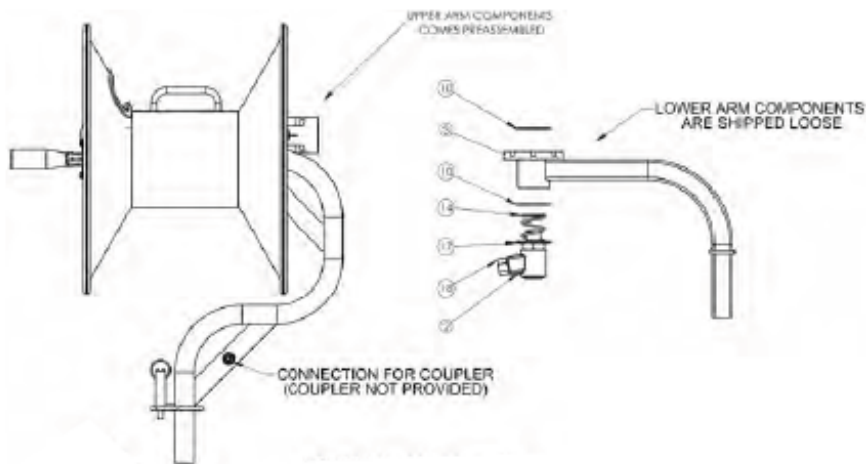


**\*\*SPECIAL PRICING\*\***

**\$439.50**



## ASSEMBLY INSTRUCTIONS



1. Slide washer (item 10) over the shaft of the upper arm assembly.
2. Insert the shaft on the lower arm.
3. Assemble the remaining components with the layout shown. Use thread sealant (not provided) on the inlet threads of the swivel.
4. Attach inlet hose to the swivel on the lower arm assembly.
5. Attach the outlet hose to the swivel on the upper arm assembly then secure to the hose clamp (item 6).
6. Route the opposite end of the hose through the openings in the flange and hose guide.
5. The hose reel is ready for operation.

## PARTS LIST

Item	Description	QTY
1	Brake kit, 30mm	1
2	SS Swivel 10° offset, M22X1/2NPT-F, 5000 PSI	2
3	Arm kit, Lower	1
4	SS Snap Ring, 16	1
5	Guide, Hose	1
6	Clamp, Hose	1
7	Washer, M6	2
8	Nut, Nylok, M6	2
9	Bushing	2
10	Washer	4
11	Handle Kit, 30 Degrees	1
12	Assy, Flange	1
13	Guard, Hose	1
14	Spring	1
15	Arm Kit, Upper	1
16	Washer, M16	1
17	Washer, 5/32X23X2	1
18	Fitting, 1/2 NPT-MX 3/8 NPT-F	2
19	Flange Nut, M6, SS	1
20	Label, Caution Surface May be Hot	1

