

# PRODUCT INFORMATION PACKET



Model No: 140414.00  
Catalog No: 140414.00  
Agricultural Motor, 10 HP, 1 Ph, 60 Hz, 230 V, 1800 RPM, 215T Frame, TEFC



Regal and Leeson are trademarks of Regal Rexnord Corporation or one of its affiliated companies.  
©2022 Regal Rexnord Corporation, All Rights Reserved. MC017097E





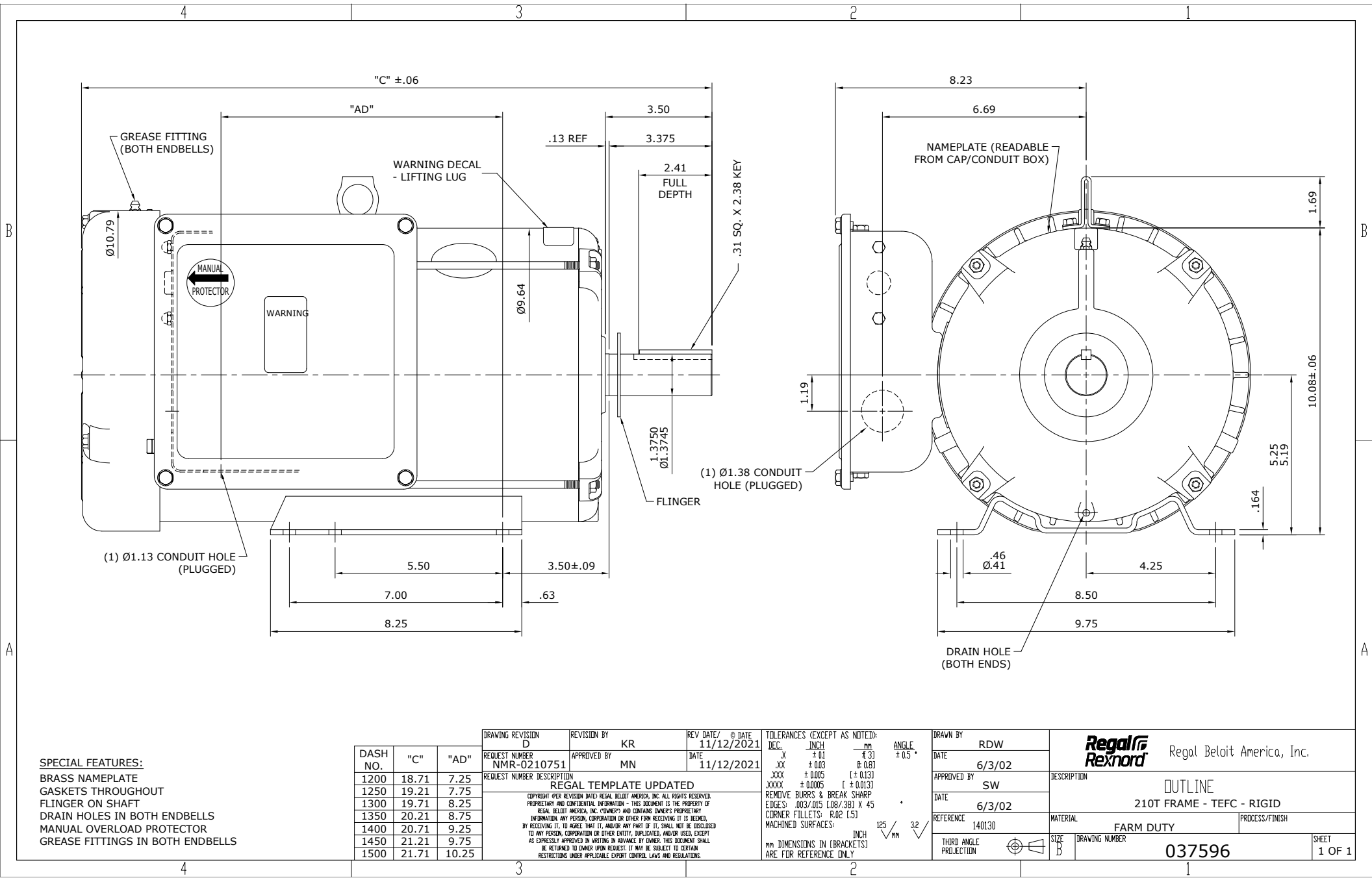
### Nameplate Specifications

|                        |                |                            |                             |
|------------------------|----------------|----------------------------|-----------------------------|
| Output HP              | 10 Hp          | Output KW                  | 7.5 kW                      |
| Frequency              | 60 Hz          | Voltage                    | 230 V                       |
| Current                | 40.0 A         | Speed                      | 1740 rpm                    |
| Service Factor         | 1.15           | Phase                      | 1                           |
| Efficiency             | 86.5 %         | Power Factor               | 95                          |
| Duty                   | Continuous     | Insulation Class           | F                           |
| Design Code            | NO DESIGN CODE | KVA Code                   | H                           |
| Frame                  | 215T           | Enclosure                  | Totally Enclosed Fan Cooled |
| Thermal Protection     | Manual         | Ambient Temperature        | 40 °C                       |
| Drive End Bearing Size | 6207           | Opp Drive End Bearing Size | 6206                        |
| UL                     | Recognized     | CSA                        | Y                           |
| CE                     | N              | IP Code                    | 43                          |
| Number of Speeds       | 1              |                            |                             |

### Technical Specifications

|                       |                               |                       |                            |
|-----------------------|-------------------------------|-----------------------|----------------------------|
| Electrical Type       | Capacitor Start Capacitor Run | Starting Method       | Across The Line            |
| Poles                 | 4                             | Rotation              | Selective Counterclockwise |
| Resistance Main       | .114 Ohms                     | Mounting              | Rigid Base                 |
| Motor Orientation     | Horizontal                    | Drive End Bearing     | Ball                       |
| Opp Drive End Bearing | Ball                          | Frame Material        | Rolled Steel               |
| Shaft Type            | T                             | Overall Length        | 20.71 in                   |
| Frame Length          | 14.00 in                      | Shaft Diameter        | 1.375 in                   |
| Shaft Extension       | 3.38 in                       | Assembly/Box Mounting | F1 ONLY                    |
| Connection Drawing    | 005461.02                     | Outline Drawing       | 037596-1400                |

This is an uncontrolled document once printed or downloaded and is subject to change without notice. Date Created:11/28/2022





**SPECIAL FEATURES:**

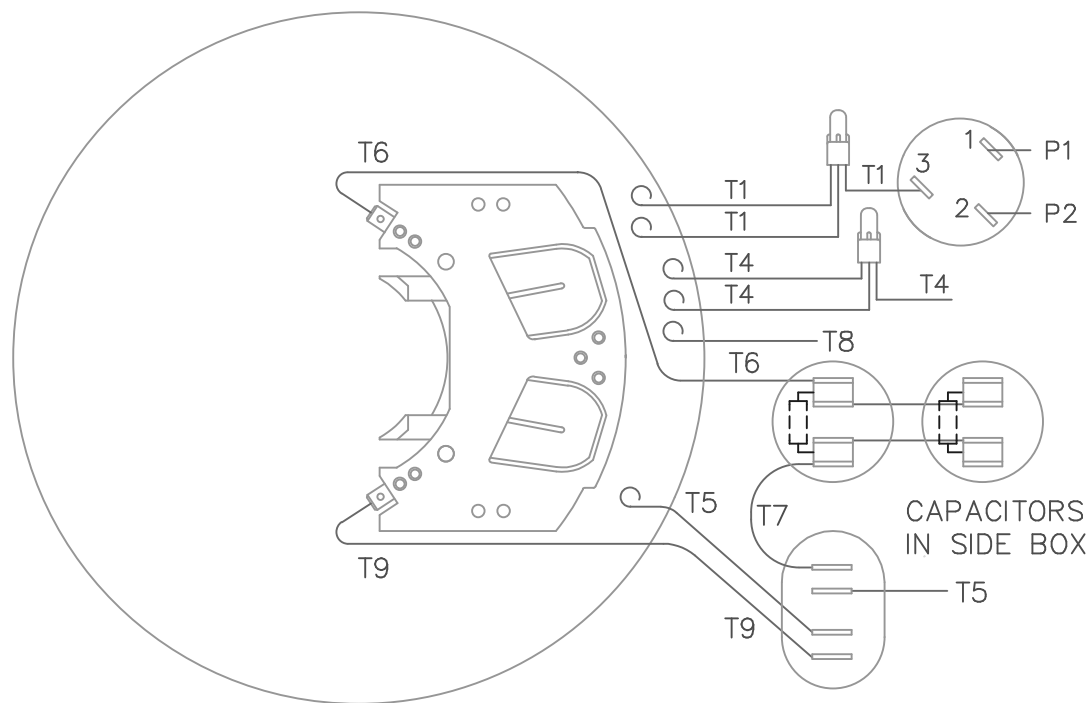
- BRASS NAMEPLATE
- GASKETS THROUGHOUT
- FLINGER ON SHAFT
- DRAIN HOLES IN BOTH ENDBELLS
- MANUAL OVERLOAD PROTECTOR
- GREASE FITTINGS IN BOTH ENDBELLS

| DASH NO. | "C"   | "AD"  |
|----------|-------|-------|
| 1200     | 18.71 | 7.25  |
| 1250     | 19.21 | 7.75  |
| 1300     | 19.71 | 8.25  |
| 1350     | 20.21 | 8.75  |
| 1400     | 20.71 | 9.25  |
| 1450     | 21.21 | 9.75  |
| 1500     | 21.71 | 10.25 |

| DRAWING REVISION   | REVISION BY | REV DATE / @ DATE |
|--|-------------|-------------------|
| D  | KR          | 11/12/2021        |
| REQUEST NUMBER   | APPROVED BY | DATE              |
| NMR-0210751  | MN          | 11/12/2021        |
| REGAL TEMPLATE UPDATED   |             |                   |
| <small>                     COPYRIGHT (PER REVISION DATE) REGAL BELLOIT AMERICA, INC. ALL RIGHTS RESERVED.<br/>                     PROPRIETARY AND CONFIDENTIAL INFORMATION - THIS DOCUMENT IS THE PROPERTY OF<br/>                     REGAL BELLOIT AMERICA, INC. (OWNER) AND CONTAINS OWNER'S PROPRIETARY<br/>                     INFORMATION. ANY PERSON, CORPORATION OR OTHER FIRM RECEIVING IT IS DEEMED<br/>                     BY RECEIVING IT, TO AGREE THAT IT, AND/OR ANY PART OF IT, SHALL NOT BE DISCLOSED<br/>                     TO ANY PERSON, CORPORATION OR OTHER ENTITY, DUPLICATED, AND/OR USED, EXCEPT<br/>                     AS EXPRESSLY APPROVED IN WRITING IN ADVANCE BY OWNER. THIS DOCUMENT SHALL<br/>                     BE RETURNED TO OWNER UPON REQUEST. IT MAY BE SUBJECT TO CERTAIN<br/>                     RESTRICTIONS UNDER APPLICABLE EXPORT CONTROL LAWS AND REGULATIONS.                 </small> |             |                   |

**TOLERANCES (EXCEPT AS NOTED):**  
 DEC. INCH MM ANGLE  
 .X ± .01 ± .31 ± .5°  
 .XX ± .003 ± .013  
 .XXX ± .0005 ± .013  
 .XXXX ± .0005 ± .013  
 REMOVE BURRS & BREAK SHARP  
 EDGES: .003/.015 (.08/.38) X 45  
 CORNER FILLETS: R.02 (.5)  
 MACHINED SURFACES: INCH 125 32  
 mm DIMENSIONS IN [BRACKETS]  
 ARE FOR REFERENCE ONLY

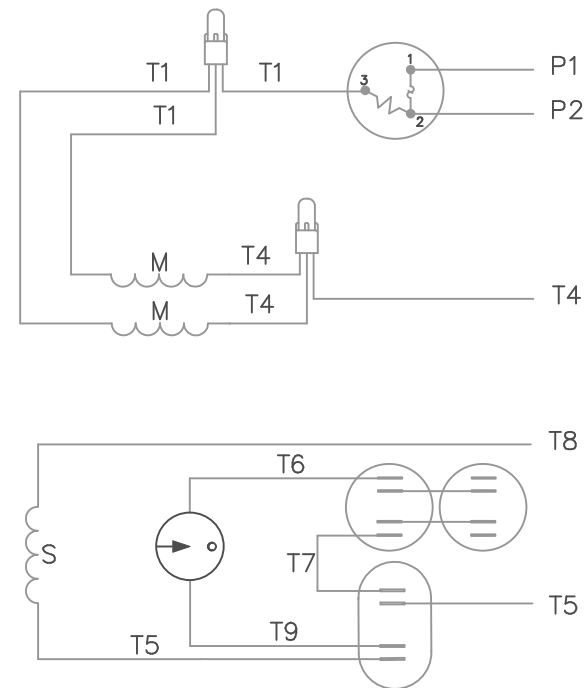
|   |  |   |                            |        |
|---|--|---|----------------------------|--------|
| DRAWN BY  |  |  | Regal Beloit America, Inc. |        |
| DATE  |  |   | DESCRIPTION                |        |
| 6/3/02  |  |   |                            |        |
| APPROVED BY   |  |   |                            |        |
| SW  |  | OUTLINE   |                            |        |
| DATE  |  | 210T FRAME - TEFC - RIGID   |                            |        |
| 6/3/02  |  |   |                            |        |
| REFERENCE   |  | MATERIAL  | PROCESS/FINISH             |        |
| 140130  |  | FARM DUTY   |                            |        |
| THIRD ANGLE PROJECTION  |  | SIZE  | DRAWING NUMBER             | SHEET  |
|  |  | B   | 037596                     | 1 OF 1 |



VIEW FROM OUTSIDE OF  
MOTOR AT SWITCH END

CAUTION:  
LEAD WIRE INSULATION TO  
EXTEND MIN. OF 1/4" INTO  
CONNECTOR INSULATION

## LINE LEADS



ROTATION  
FACING  
LEAD END

L1

L2

JOIN &  
INSULATE

C.C.W.

P1

T4, T5

P2, T8

C.W.

P1

T4, T8

P2, T5

TOLERANCES  
UNLESS SPECIFIED

DEC. INCHES

.X ±.1

.XX ±.01

.XXX ±.005

.XXXX ±.0005

ANG ±1/2°



ELECTRIC MOTORS  
GEARMOTORS  
AND DRIVES

TITLE  
EXTERNAL WIRING DIAGRAM  
TYPE "K" WITH PROTECTOR

MAT'L. DECAL 080135

FINISH

DRAWN RDW 10/25/02

CHK

APPD

SCALE 1=2

REF 005461-01

FMF 140706

PREV

NO.

REVISION

BY &amp; DATE

CHK

RFP 10/25/02

DIST

CAD FILE

00546102

SIZE

A

DRAWING NO.

005461-02

REV.

THIS DRAWING IN DESIGN AND DETAIL IS OUR PROPERTY AND MUST NOT BE USED EXCEPT  
IN CONNECTION WITH OUR WORK ALL RIGHTS OF DESIGN AND INVENTION ARE RESERVED  
THIS IS AN ELECTRONICALLY GENERATED DOCUMENT - DO NOT SCALE THIS PRINT



**1051 CHEYENNE AVE.  
GRAFTON, WI 53024  
PH. 262-377-8810**

**CERTIFICATION DATA SHEET**

**CATALOG #:** 140414.00

**CONN. DIAGRAM:** 005461.02

**OUTLINE:** 037596-1400

**MOUNTING:** F1 ONLY

**WINDING #:** K9427 FR 2 A

**TYPICAL MOTOR PERFORMANCE DATA**

| HP | kW   | SYNCR. RPM | F.L. RPM | FRAME | ENCLOSURE | KVA CODE | DESIGN         |
|----|------|------------|----------|-------|-----------|----------|----------------|
| 10 | 7.50 | 1800       | 1740     | 215T  | TEFC      | H        | NO DESIGN CODE |

| PH | Hz | VOLTS | AMPS | START TYPE      | DUTY       | INSL | S.F. | AMB°C |
|----|----|-------|------|-----------------|------------|------|------|-------|
| 1  | 60 | 230   | 40   | ACROSS THE LINE | CONTINUOUS | F4   | 1.15 | 40    |

|                       |      |                      |      |                      |      |                 |  |                   |
|-----------------------|------|----------------------|------|----------------------|------|-----------------|--|-------------------|
| <b>FULL LOAD EFF:</b> | 86.5 | <b>3/4 LOAD EFF:</b> | 86.2 | <b>1/2 LOAD EFF:</b> | 84.1 | <b>GTD. EFF</b> |  | <b>ELEC. TYPE</b> |
| <b>FULL LOAD PF:</b>  | 95   | <b>3/4 LOAD PF:</b>  | 96.4 | <b>1/2 LOAD PF:</b>  | 94.6 | 84              |  | CAP START CAP RUN |

| F.L. TORQUE | LOCKED ROTOR AMPS | L.R. TORQUE     | B.D. TORQUE      | F.L. RISE°C |
|-------------|-------------------|-----------------|------------------|-------------|
| 30 LB-FT    | 295               | 117 LB-FT 390 % | 69.5 LB-FT 232 % | 92          |

| SOUND PRESSURE @ 3 FT. | SOUND POWER | ROTOR WK^2    | MAX. WK^2   | SAFE STALL TIME | STARTS / HOUR | APPROX. MOTOR WGT |
|------------------------|-------------|---------------|-------------|-----------------|---------------|-------------------|
| 0 dBA                  | 10 dBA      | 1.157 LB-FT^2 | 1.2 LB-FT^2 | 10 SEC.         | 0             | 156 LBS.          |

**\*\*\* SUPPLEMENTAL INFORMATION \*\*\***

| DE BRACKET TYPE | ODE BRACKET TYPE | MOUNT TYPE | ORIENTATION | SEVERE DUTY | HAZARDOUS LOCATION | DRIP COVER | SCREENS | PAINT                  |
|-----------------|------------------|------------|-------------|-------------|--------------------|------------|---------|------------------------|
| STANDARD        | STANDARD         | RIGID      | HORIZONTAL  | FALSE       | NONE               | FALSE      | NONE    | RED - LEESON FARM DUTY |

| BEARINGS |      | GREASE     | SHAFT TYPE | SPECIAL DE | SPECIAL ODE | SHAFT MATERIAL    | FRAME MATERIAL |
|----------|------|------------|------------|------------|-------------|-------------------|----------------|
| DE       | ODE  |            |            |            |             |                   |                |
| BALL     | BALL | POLYREX EM | T          | NONE       | NONE        | AISI 1045 (C-240) | ROLLED STEEL   |
| 6207     | 6206 |            |            |            |             |                   |                |

| THERMO-PROTECTORS |            |          |          | THERMISTORS | CONTROL | SPACE HEATERS |
|-------------------|------------|----------|----------|-------------|---------|---------------|
| THERMOSTATS       | PROTECTORS | WDG RTDs | BRG RTDs |             |         |               |
| NONE              | MANUAL     | NONE     | NONE     | NONE        | FALSE   | NONE VOLTS    |

\*

N

O

T

E

S

**INVERTER TORQUE:** NONE  
**INV. HP SPEED RANGE:** NONE

**ENCODER:** NONE  
NONE NONE  
NONE NONE PPR

**BRAKE:** NONE NONE  
NONE P/N NONE  
NONE NONE  
NONE FT-LB NONE V NONE Hz



# LEESON ELECTRIC CORPORATION

## TYPICAL PERFORMANCE CURVE for AC MOTOR

Model No 140414.00

Curve at

230

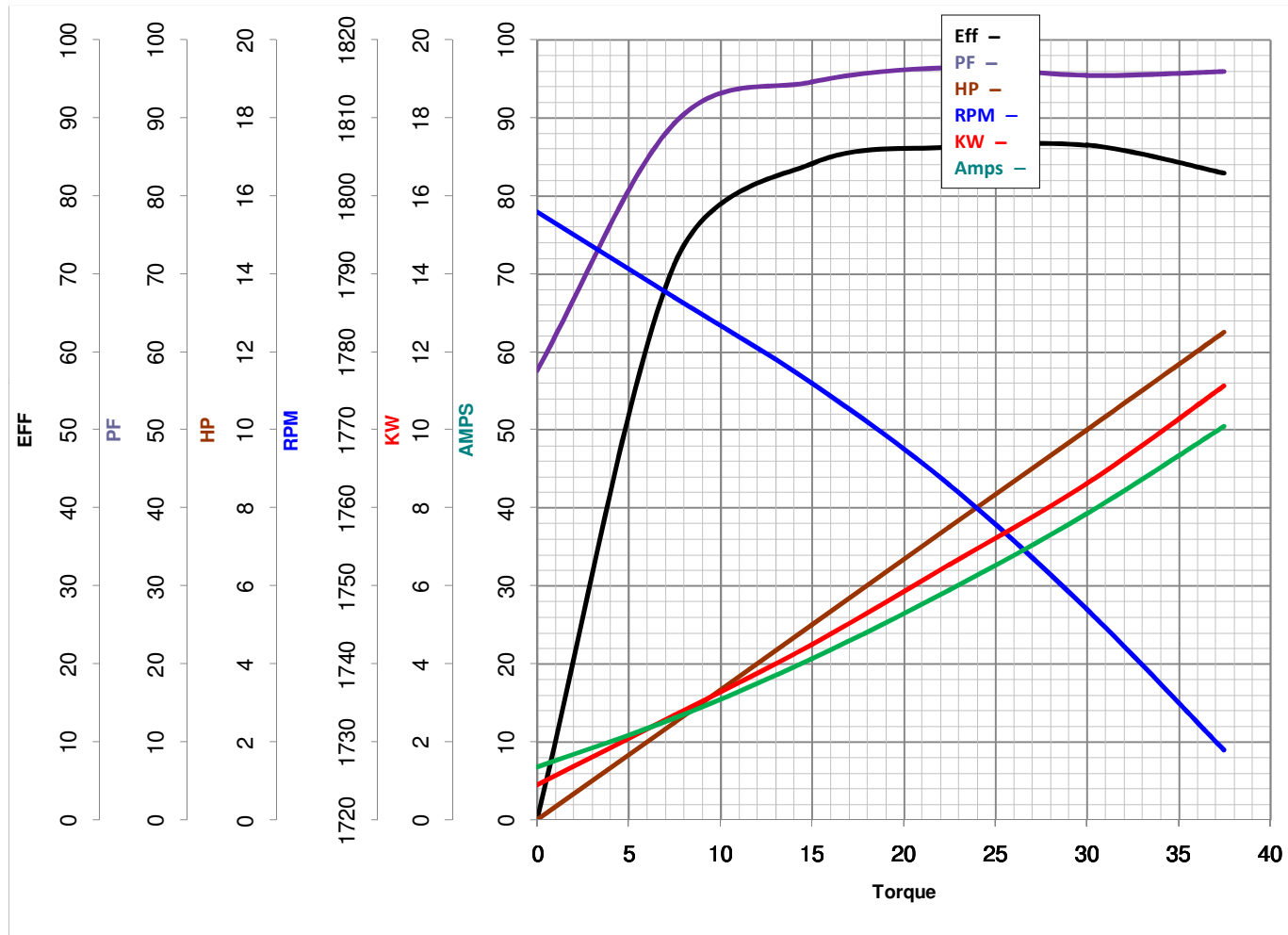
Volts

HP 10.00PHASE 160

HZ

10

HP

VOLTS 230Catalog No 140414.00HZ 60RPM 1740

Torque in Lb.Ft

FL TORQUE 30 Lb.FtBD TORQUE 69.5 Lb.FtLR TORQUE 117 Lb.FtFL AMPS 40PU TORQUE 66.0 Lb.FtLR AMPS 295

WINDING K9427-2

Date 4/23/2018