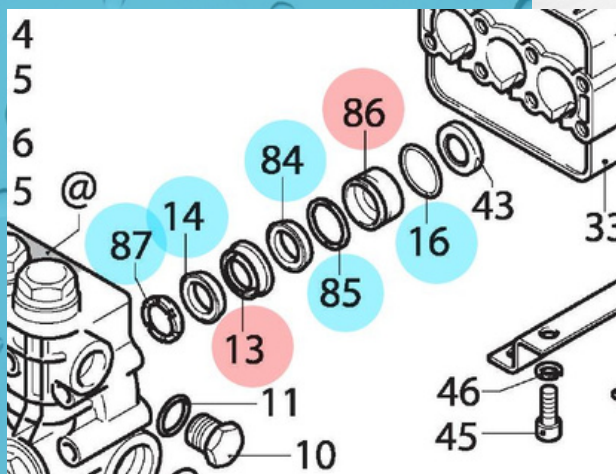


PWP

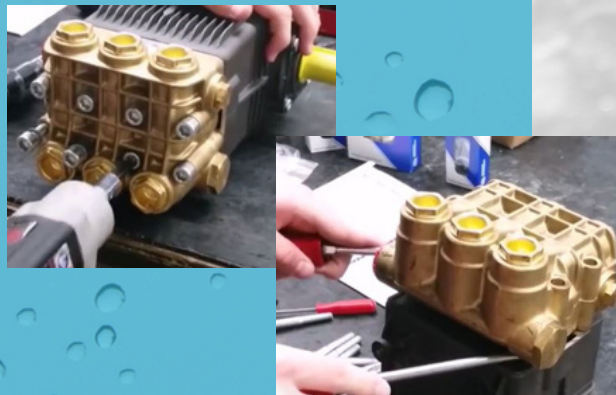
INSTRUCTIONS FOR CONVERTING MODEL 2106 & 2119 CNC PUMPS BACK TO FACTORY SPECS



BEFORE YOU START, ENSURE YOU HAVE ALL THE PIECES FOR BOTH THE 42707 AND 42708 KITS AS SHOWN ON THE LEFT.



THE ONLY PIECES THAT SHOULD BE IN THESE ASSEMBLIES ARE SHOWN TO LEFT WITH THE 42708 KIT HIGHLIGHTED IN BLUE AND THE 42707 KIT HIGHLIGHTED IN RED. ANY OTHER PROPRIETARY PIECES THAT WERE ADDED BY THE CNC PUMP MANUFACTURER SHOULD BE REMOVED.



REMOVE THE HEAD/MANIFOLD BY REMOVING THE 8 MANIFOLD BOLTS USING AN 8MM HEX SOCKET AND THEN USING TWO SCREWDRIVERS TO HOIST THE MANIFOLD UP EVENLY. BE CAREFUL NOT BREAK OR DAMAGE THE CERAMIC PLUNGERS BY TWISTING OR PUTTING ANY SIDE LOAD ON THE HEAD. AFTER REMOVING THE HEAD/MANIFOLD, IF ANY PARTS STAY ON THE PLUNGER SIMPLY TWIST THE CRANKSHAFT SO THEY CAN BE REMOVED.

PWP

INSTRUCTIONS FOR CONVERTING MODEL 2106 & 2119 CNC PUMPS BACK TO FACTORY SPECS

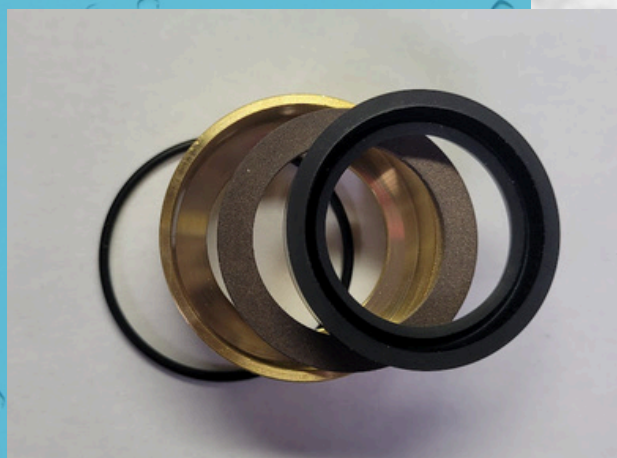


REMOVE THE OLD SEALS AND PISTON GUIDES AND PREPARE YOUR NEW SEAL ARRANGEMENTS. SOME FIND IT EASIER TO ASSEMBLE THE SEALS FIRST AND PUT THEM IN TOGETHER, OR SOME FIND IT EASIER TO THE ASSEMBLY PIECES IN INDIVIDUALLY. BOTH WAYS ARE OKAY.



THE HIGH PRESSURE SEAL AND RINGS WILL BE ARRANGED AS SHOWN TO TO THE LEFT.

THE WHITE RING WILL GO INTO THE PUMP HEAD FIRST WITH FLAT SIDE WITH THE NOTCHES DOWN. THE HIGH PRESSURE SEAL WILL MATE WITH THAT RING, AND THEN THE BRASS SEAL RETAINER WILL GO ON TOP WITH THE V-GROOVE MATING TO THE HIGH PRESSURE SEAL.



THE LOW PRESSURE SEAL AND REAR SEAL RETAINER WILL BE IN THIS ORDER (ALTHOUGH THE ASSEMBLY WILL BE TURNED UPSIDE DOWN FOR INSERTION.) THE O-RING WILL FIT IN THE GROOVE AROUND THE SEAL RETAINER. THE SUPPORT RING WILL INSERT INTO THE RETAINER FIRST, FOLLOWED BY THE BLACK LOW-PRESSURE SEAL (OR GREEN IF USING VITON.)



INSTRUCTIONS FOR CONVERTING MODEL 2106 & 2119 CNC PUMPS BACK TO FACTORY SPECS



COMPLETE LOW PRESSURE SEAL ASSEMBLY
SHOWN ON LEFT.



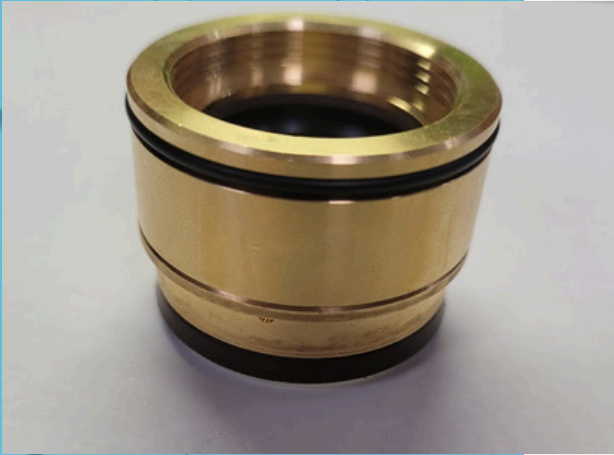
COMPLETE HIGH PRESSURE SEAL ASSEMBLY
SHOWN ON LEFT.



COMPLETE SEAL ASSEMBLY SHOWN ON LEFT.



INSTRUCTIONS FOR CONVERTING MODEL 2106 & 2119 CNC PUMPS BACK TO FACTORY SPECS



THIS ENTIRE SET WILL INSERT INTO THE MANIFOLD WITH THE WHITE SUPPORT RING AT THE BOTTOM AND THE THREADED END OF THE OUTER BRASS GUIDE EXPOSED TO THE TOP.



YOU MAY FIND IT EASIER TO PUT THE LOW PRESSURE SEAL PIECES IN INDIVIDUALLY STARTING WITH THE WHITE RING (FLAT WHITE SIDE WITH NOTCHES FACING DOWN), FOLLOWED BY THE LOW PRESSURE SEAL, AND FINALLY THE GUIDE.



PRESS THE LOW PRESSURE ASSEMBLY FIRMLY INTO THE HEAD (THREADS FACING UP) UNTIL THEY ARE INSERTED COMPLETELY.



INSTRUCTIONS FOR CONVERTING MODEL 2106 & 2119 CNC PUMPS BACK TO FACTORY SPECS



TO INSTALL THE HEAD/MANIFOLD BACK ON TO THE DRIVE END, TURN THE CRANKSHAFT UNTIL THE TWO SIDE PLUNGERS ARE EXTENDED EQUALLY. PLACE THE MANIFOLD ONTO THE PLUNGERS AND USE A SOFT FACED HAMMER OR Mallet TO TAP THE HEAD ON.



INSTALL THE HEAD BOLTS AND TORQUE TO 442 IN-LB USING AN ALTERNATING PATTERN EVENLY DISTRIBUTING PRESSURE.



HERE IS THE PATTERN RECOMMENDED BY ANNOVI REVERBERI (AR NORTH AMERICA.)

AS ALWAYS, IF YOU HAVE ANY QUESTIONS PLEASE DON'T HESITATE TO REACH OUT!