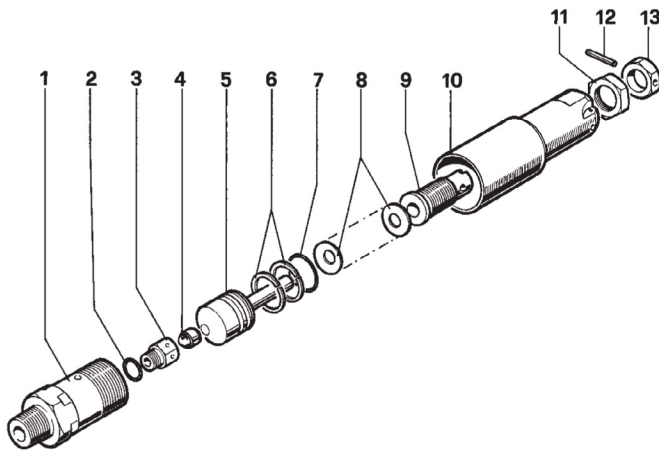


**FEATURES**

- Brass and Stainless Steel Construction
- Fully Adjustable
- Protects system components from over-pressure conditions

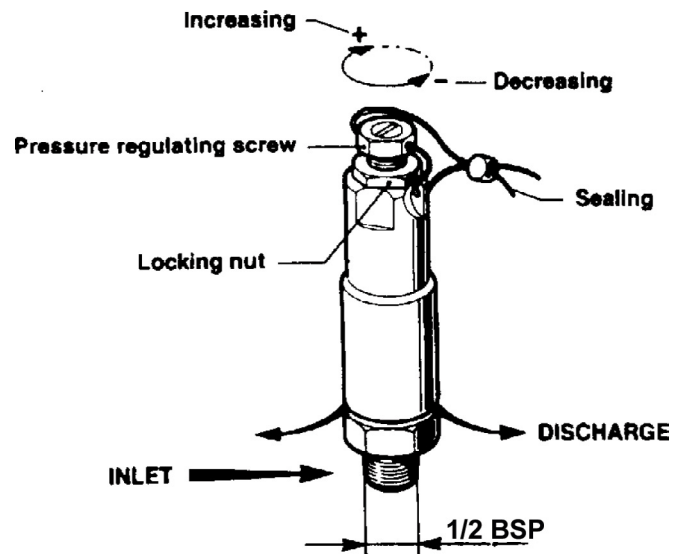
**SPECIFICATIONS**

Part Number	ZKS3
Flow Rate	2.6 - 26.4 GPM
Min Pressure	870 PSI
Max Pressure	10,150 PSI
Max Temperature	284° F
Inlet Port	1/2" BSPT
Discharge Port	Discharge to atmosphere
Weight	2.0 lb.
Dimensions	Ø 1.2 x 5.7"

**PARTS LIST**

ZKS3 Safety Valve

No.	Part No.	Description	Qty.
1	36254366	Valve Seat	1
2	701012	O-ring, .364 x .070	1
3	36254466	Seat Insert	1
4	36260602	Ball	1
5	36254702	Piston Assembly	1
6	92772200	Compression Ring	2
7	90360200	O-ring, .926 x .070	1
8	94849500	Beveled Washer	19
9	36254870	Regulating Adjustment Screw	1
10	36254270	Unloader Body	1
11	92263800	Nut	1
12	97673000	Pin	1
13	36254970	Nut	1



General Pump  
is a member of  
the Interpump Group

